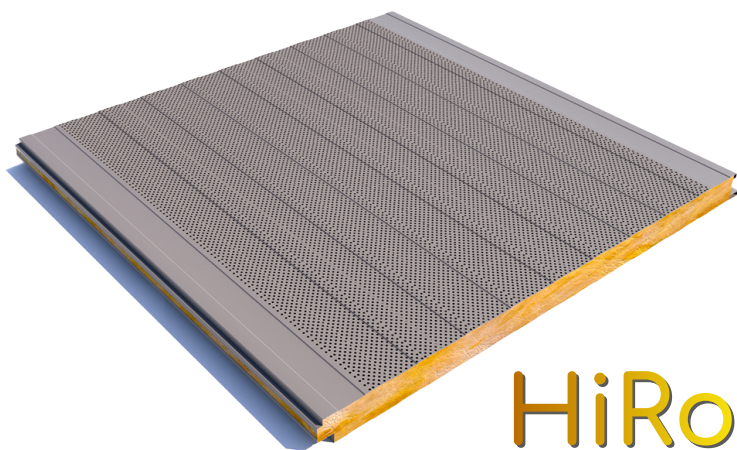


FAÇADE PANEL - HiRock - ACOUSTIC
FAÇADE PANEL HIDDEN FIXING

EXTERIOR FACE
 Pre-painted steel

INSULATION
 Rock Wool
 100 - 125 kg/m³
INTERIOR FACE
 Pre-painted steel

THICKNESSES mm (in.)
 40/50/60/80/100
 [1.57/1.97/2.36/3.15/3.94]

USEFUL WIDTH:
 1000 mm (39.37 in.)

USE
 Façades

HiRock
 By  Hiansa Panel

TECHNICAL SPECIFICATIONS

Fire: A2-s1,d0 || Water: Non-hydrophilic || Acoustic: depending on its thickness | Neither causes nor favors the corrosion of materials. It does not promote bacterial development.

The enclosure solution for façades is a panel with hidden screws that can be made in different finishes (micro-profiling, semi-smooth and smooth), which combined with the different possibilities of materials (steel, aluminum) and qualities of the cladding and colors, allows for offering aesthetic and technical solutions that are adapted to each project.

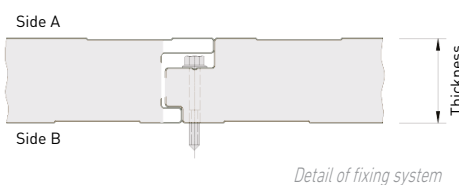
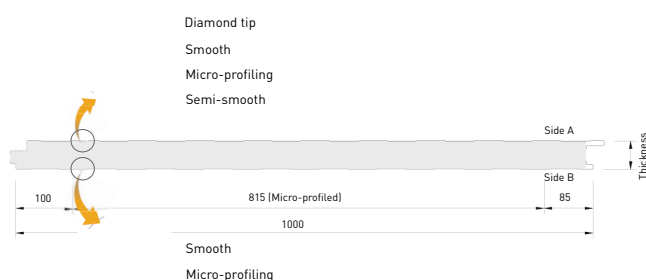
ROCK WOOL FAÇADE PANELS - HiRock - Acoustic - 125 kg/m³

Thickness	mm [in.]	40 (1.57)	50 (1.97)	60 (2.36)	80 (3.15)	100 (3.94)	
Weight ⁽¹⁾	[kg/m ²]	10.61	11.58	12.54	14.48	16.42	
Heat transfer ⁽¹⁾	[W/m ² ·K]	Roof	0.970	0.793	0.671	0.456	0.358
		Façade	0.948	0.778	0.660	0.450	0.354
Fire resistance ⁽²⁾	UNE-EN 13.501-1	A2-s1,d0					
Fire resistance ⁽²⁾	UNE-EN 13.501-2	-	EI 30	EI 30	EI 90 E 120	EI 180	
Acoustic absorption	[aw]	0.95					
Acoustic Insulation (Rw) ⁽³⁾	[dB]	-	30 dB	31 dB	31 dB	31 dB	

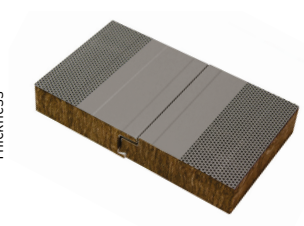
⁽¹⁾ Values for nominal sheet thicknesses 0.5 mm - 0.5 mm and panel width of 1 m.

⁽²⁾ See available certificates.

⁽³⁾ Query for C (pink noise) and Ctr (Traffic Noise) values

GEOMETRIC SPECIFICATIONS AND FINISHES


Detail of fixing system



STANDARDS APPLIED

Ref. Standard	Description
EN 14509-2014	Metal double-sided insulated self-supporting sandwich panel. Products made at the factory. Specifications.
EN 13162	Thermal insulation products for building applications. Manufactured products of mineral wool (MW). Specifications.
EN 10169	Flat steel products, continuous coated with organic materials (pre-painted). Technical supply conditions.
EN 13501	Classification based on the fire performance of construction products and building elements. Part 1.

RESISTANCE TABLES

OVERLOADS [Kg/m²] FAÇADE - HiRock (Acoustic) - 125 kg/m³

Panel [mm]		SPAN [m]				
		1.5	2	2.5	3	3.5
1 opening	40	111	-	-	-	-
	50	124	93	-	-	-
	60	147	122	-	-	-
	80	178	143	111	-	-
	100	203	160	149	107	95
2 openings	40	115	-	-	-	-
	50	128	96	-	-	-
	60	152	126	-	-	-
	80	184	148	115	-	-
	100	210	166	154	111	98
3 openings	40	123	-	-	-	-
	50	136	102	-	-	-
	60	161	134	-	-	-
	80	196	157	122	-	-
	100	223	176	164	118	105

Calculations performed for Steel S220GD; L/200; nominal sheet thicknesses 0.5-0.5

COLORS

Standard colors (***):

Pearl Gray
5001



Silver Metallic
9006



Pyrenees White
1006



Bidasoa Cream
2002



Navarra Green
3000



Teja Red
7001



(***) other colors on request

HIANSA PANEL S.A. reserves the right at all times to make changes to this document without prior notice.